

Antonín Dvorák
Symphony No. 9 in E Minor, Op. 95

Corno I.

in E.
Adagio.

Vio I.

6



Allegro molto.

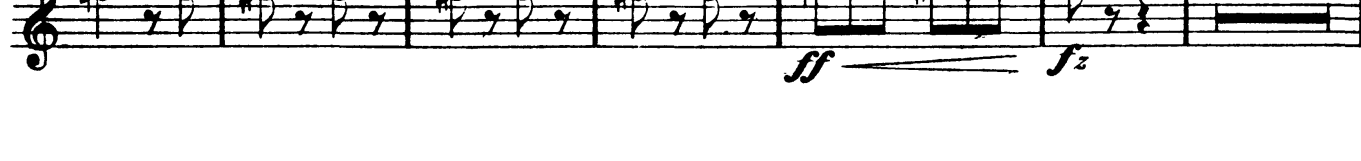
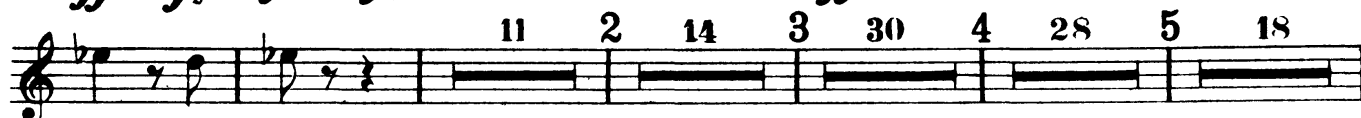
1

12

F.

attacca

6



Dvorak — Symphony No. 9 in E Minor, Op. 95 "New World"

2

Corno I.

9 12 Fl.

ff Viol. I. *ffz* *ffz* *fz*

1 5 10 34 11 *fz* *fz* *ff*

4 20 12 18 Viol. I. *dim. p*

13 *fff* *fz*

ff 1 1 1 1

fz *fz* *fz*

II.

in E.
Largo.

15 1 Cello. Fl. *ppp* *f* *p*

7 1 5 Clar. Viol. I. *fz* *ff dim.* *pp* *con sordini.*

2 Un poco più mosso. meno mosso. 3 Poco più mosso. *Poco*

Meno. 4 12 5 Viol. I. *ff* *ff* 10 14 *Meno mosso.*

1 2 rit. 5 *Tempo I.* 2

Viol. I. 1 rit. in tempo rit. Molto Adagio. *p* *pp* 1 5 1 2

III. Scherzo .

This page of a musical score is for a symphony, likely in 3/4 time. It features multiple staves with various musical notations, including notes, rests, and dynamic markings. The tempo is marked "Molto vivace." at the beginning. The score includes several measures with dynamics such as *f*, *ff*, *p*, *mf*, *ffz*, *dim.*, *mf*, *p*, *pp*, and *ff*. There are also tempo markings like "Poco sostenuto." and "a tempo". The score is divided into sections, with measures numbered 1 through 30. The final section is marked "Coda." and includes a "Scherzo D.C. al fine poi la Coda." instruction. The score is written for a full orchestra, with parts for Flute (Fl.), Violin I (Viol. I.), and Cello/Double Bass (Cello/Bass) indicated.

Corno I.

IV.

Allegro con fuoco.

in E₅ Viol. I.

The musical score for Corno I, IV, is written in E minor, 2/4 time. It begins with a treble clef and a key signature of one flat (B-flat). The tempo is marked "Allegro con fuoco." The score is divided into two systems, each containing eight staves. The first system includes a "Viol. I." part. The score features various dynamics, including *f* (forte), *ff* (fortissimo), *ffz* (fortissimo crescendo), *fz* (forte crescendo), *dim.* (diminuendo), *p* (piano), *fp* (forzando), *pp* (pianissimo), and *f* (forte). Articulations include accents, slurs, and breath marks. Fingerings are indicated by numbers 1 through 8. The score includes a key change to F major (in F) and back to E minor (in E). The piece concludes with a final *f* (forte) dynamic.

Corno I.

5

f *cresc.* *ff*

ffz *fz* *fz* *fff*

9 *Meno mosso.* *p* *pp* *in tempo* 9 3 Fl.

mf *dim.* *p* 8

10 *Un poco sostenuto.* Cello. Viola. Cello.

f *dim.* *p* 14

p *dim.* *p* Solo. *stringendo*

cresc. *molto. cresc.* 11 *Tempo I.* 3 *ff* *fff*

ff 12

ffz *fz* *fz* *fz*

11 Solo. *poco a poco ritard.* *pp*

in tempo *Meno. ritard.* *in tempo* *Un poco meno mosso.*

2 *ff* *fff*

in tempo (Allegro con fuoco.) 3 3 3 3

3 3 3 3

dim. *ppp* *lungo*